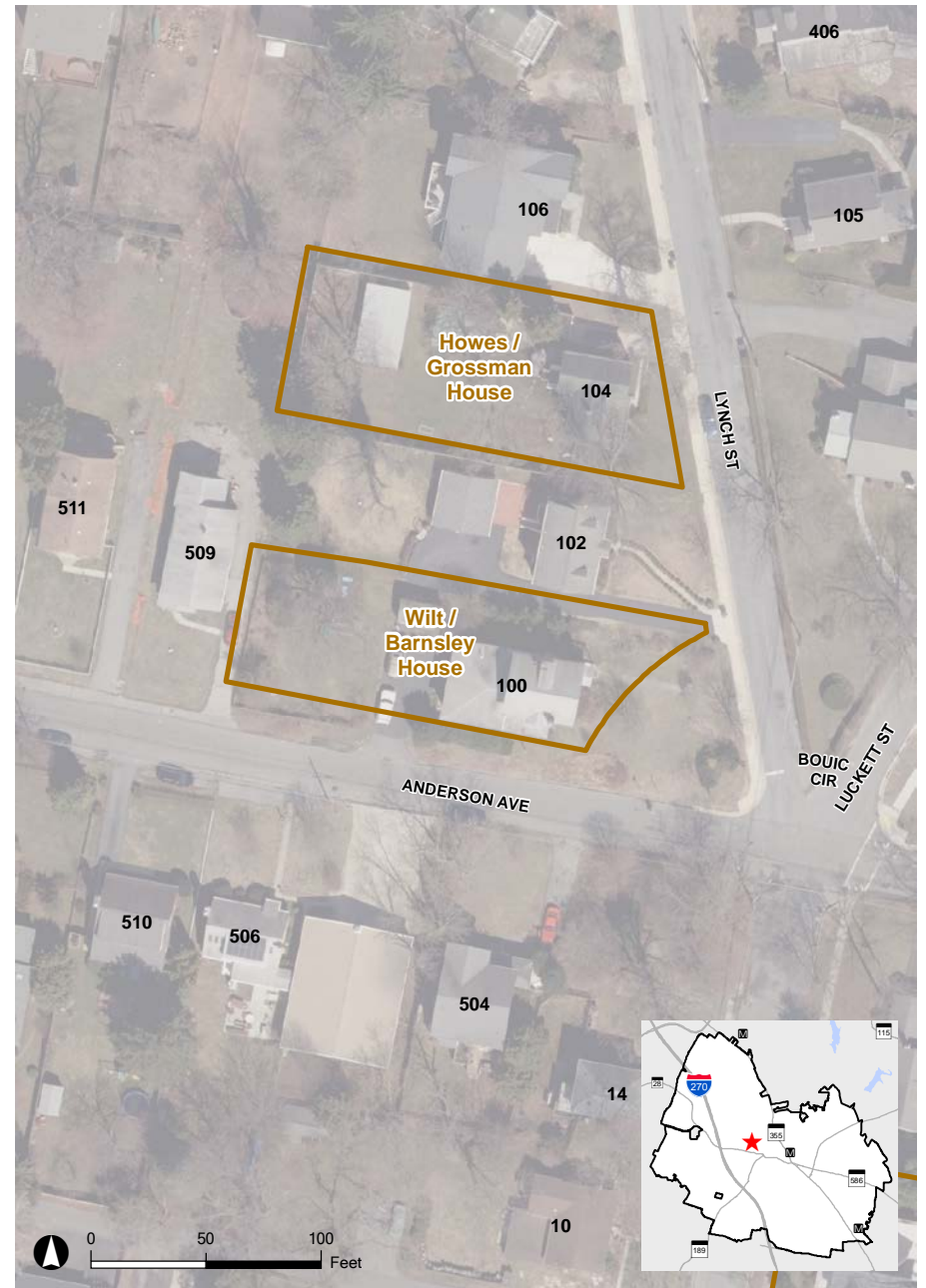


Wilt-Barnsley House

100 Lynch Street



The 1926 Wilt-Barnsley House is associated with noted Rockville teacher, Lucy Barnsley. The shed roof dormer, tripartite front window and knee brace brackets reflect the early 20th century Arts and Crafts style of residential architecture. Lucy Barnsley lived in the house from 1945 to 1926 with her daughter and son-in-law. Ms. Barnsley is credited with the first summer sessions to help children having difficulty learning. Rockville's Barnsley Elementary School is named for her, the first school in Montgomery County named for a woman.



Rockville Historic District ★ Site Location



2014 Aerial