



101 S. Washington St.



105 S. Washington St.



107 S. Washington St.



109 S. Washington St.



South Washington Street



100 S. Washington St.



104 S. Washington St.



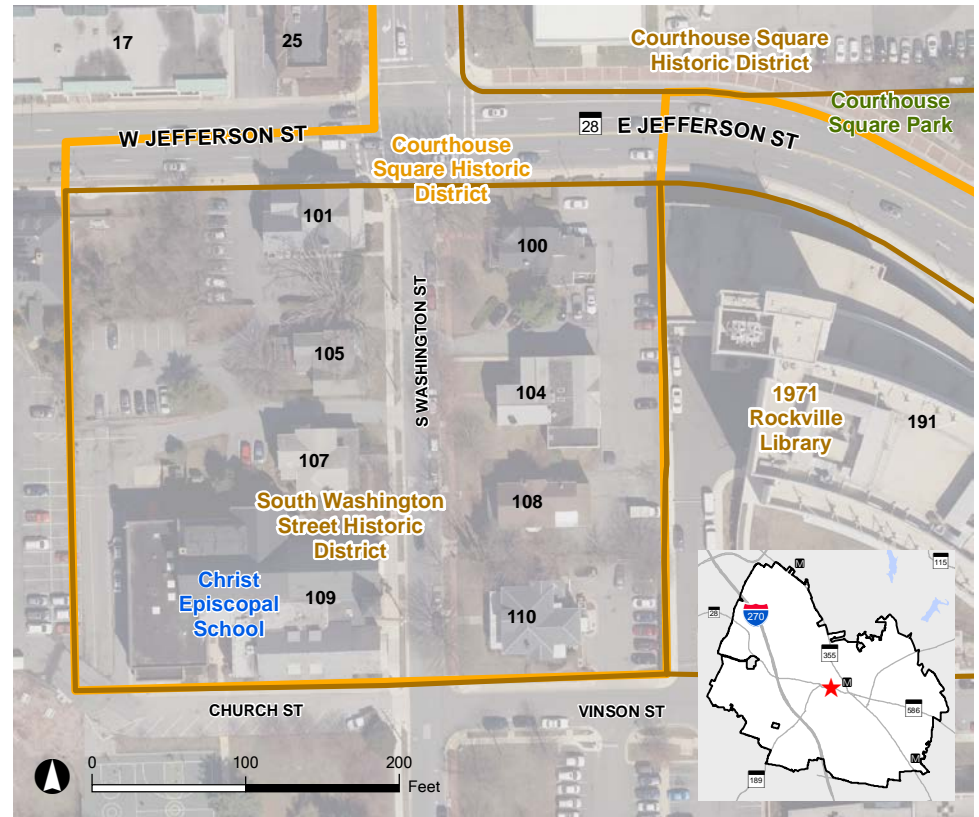
108 S. Washington St.



110 S. Washington St.

South Washington Street Historic District

The South Washington Street Historic District is a former residential neighborhood subdivided out of four lots of the original 1803 Plat of Rockville. It complements the adjacent Courthouse Square Historic District, with its public institutions, and is a part of National Register-listed Montgomery County Courthouse Historic District. The seven residential buildings along South Washington Street were built between 1884 and 1910 by either the Anderson or Stonestreet families, in Victorian and Colonial Revival styles. The only non-residential building, Christ Episcopal Church, is a Gothic-style building constructed in 1884-1887 to replace an earlier 1821 church building. All buildings are now occupied by non-residential uses.



2014 Aerial

