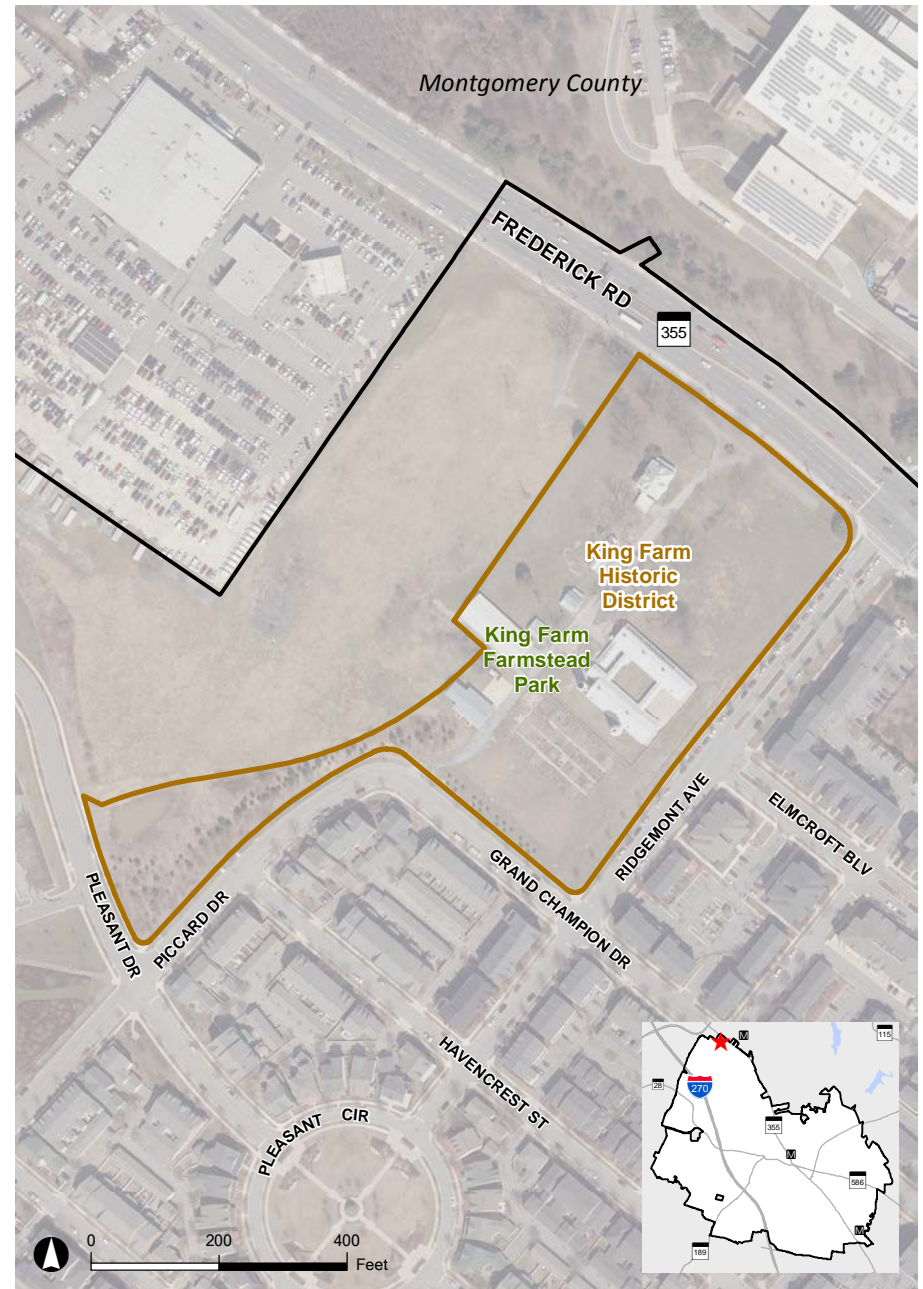


King Farm Farmstead Historic District

16100 Frederick Road



The King Farm Farmstead Historic District is part of the City of Rockville parks system. Farming has been documented here since the Graff family purchased the land in 1822. James Graff built the family residence in 1914, but sold the farm to W. Lawson King in 1924. To the King Family, this was known as "Irvington Farm". The double dairy barn was central to the daily milking operation, and the milk was sent to Thompson's Dairy in Washington D.C. for distribution.



2014 Aerial



- Rockville Historic District
- City Limits
- National Register Site
- Site Location

