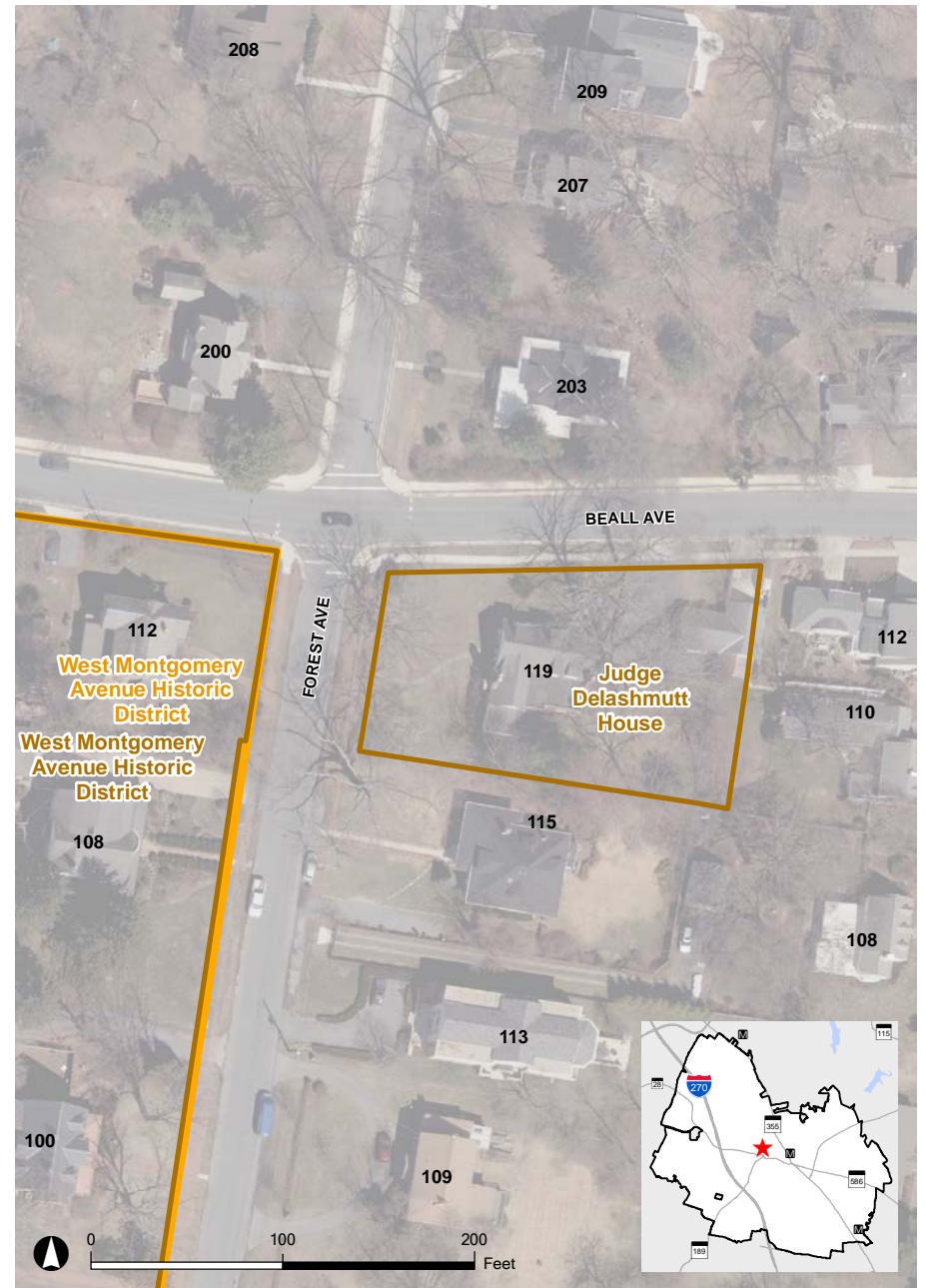


Judge Delashmutt House

119 Forest Avenue



This Tudor-Revival style house was built for Judge Donald Delashmutt and his wife, Elizabeth, in 1928. The architect was John W. Kearney of Washington, D.C. and the builder was Frank Karn of Rockville. It was unusual at that time in Rockville to hire an architect. The building also illustrates the translation of high style design to a more simple and compact form. It has many picturesque elements, including the cast stone surrounds with Tudor arch openings and side quoins, details, roof garden and asymmetrical massing.



2014 Aerial

