

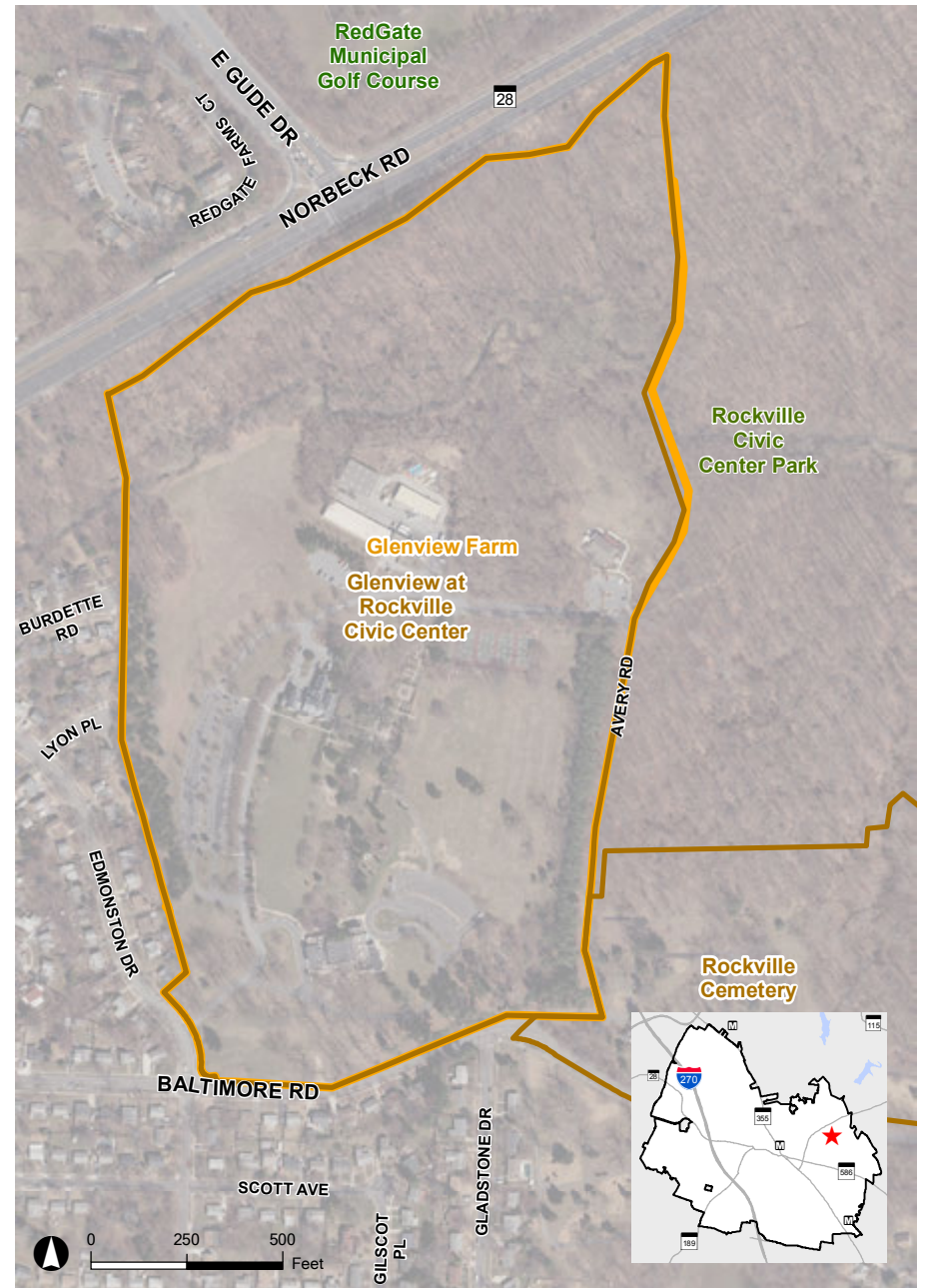
# Glenview Farm & Mansion

603 Edmonston Drive



Glenview Farm consists of a 1926 Neo-Classical Revival style house on 65 acres of landscaped grounds. The existing old house was extensively remodelled to its present appearance in the 1920's. Reportedly, the original building was a two-story frame, Greek Revival structure-built in 1835. This early building forms the main (central) part of the present house. It has a tall, three-bay facade that faces south. There is a central door, flanked by two of the original-style windows. A massive, two-story, pedimented portico, supported by four large columns, spans the entire front. The central portion was encased with a stone veneer in the 1920's, and two gable-facade wings (joined by short hyphens) were added at this time on both sides. The present structure was built, with the best of materials, in the Colonial Revival style during the estate era of the 1920's.

Other contributing elements on the property include a dollhouse cottage, formal terraced lawn and parterre gardens, bowling green, remnants of the deer park, a dam on Croydon Creek, stone boundary walls and the original entrance gate on Baltimore Road. The property is also listed in the National Register of Historic Places.



2014 Aerial

- Rockville Historic District
- Site Location
- National Register Site

